



HTH



MAGNI TH, OUR EXPERTISE AND RELIABILITY FOR YOUR NEEDS

Magni TH team expertise has been exploited for the development and creation of a specific range of heavy duty machines, the HTH RANGE.

These machines have been specifically designed for quarries, mining, oil and gas and heavy industry since their lifting capacity goes from 10 tons up to 45 tons.

A specific range of attachments has been developed too, in order to provide the great versatility of these machines, giving the opportunity to the customers to choose the best solution for their needs.

The great potential of our machines is also underlined by the attention given to the development of the cabin, which has been completely designed taking into consideration the operator needs, safety and comfort.



HTH 10.10



HTH 16.10



HTH 24.11



HTH 27.11



HTH 30.12



HTH 35.12



HTH 45.14

Cabin Design



FULL VISIBILITY CAB

The innovative design of Magni cab has been developed to grant the comfort and safety (ROPS\FOPS certification) of the operator and to make the maneuvering of the machine plain and simple.

The cabin has a full visibility, since it has a large windshield that allows the operator to look at

the load even when it is suspended on his head or when the boom is completely lowered.

The movable steering column allows the operator to get easily in and out and achieve an excellent driving position.

The fully enclosed and airtight cab is fully pressurized and provided with 100% inlet air filtration.

Heating and cold air conditioning is part of the standard equipment for all models.

A user friendly touch screen display, also usable through an automotive style joystick, is used for the control of the whole machine.



TOUCH SCREEN DISPLAY

The display has been thought to control all the functions of the machines in the most simple and intuitive way, since it is interfacing to the operator with written messages and not alphanumeric codes.

Just with the touch of a finger is possible to visualize dynamic load charts, drive page, air conditioning and options.

Moreover is available a complete integrated diagnostic that, in case of electronic and software failures, reduces after sales costs, time of machine stop and allows remote assistance.



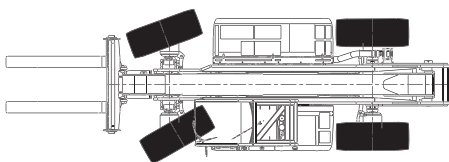


REMOTE CONTROL

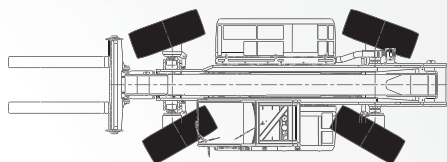
The remote control of Magni can be used to control the boom movement and reproduces the joystick controls in the cabin. Also the attachments, can be wireless managed with the remote control, granting the total safety of the operator that can stand apart from the machine reducing the risk of injuries.



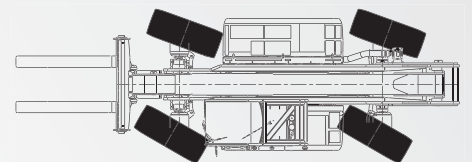
3 TYPES OF STEERING



Front steering



Round steering



Crab steering

Performances



ENGINE

From 100 kW/136 hp to 260 kW/350 hp.
The engine compartment is completely accessible on all sides for maintenance.

TRANSMISSION

10.10/16.10/24.11/27.11 hydrostatic with 2 speeds (forward and reverse).

30.12/35.12 fully automatic shifting gearbox with 3 speeds (forward and reverse)

Both allow safe and precise movements.



2,6t (5m)-4,2t (5m)-7



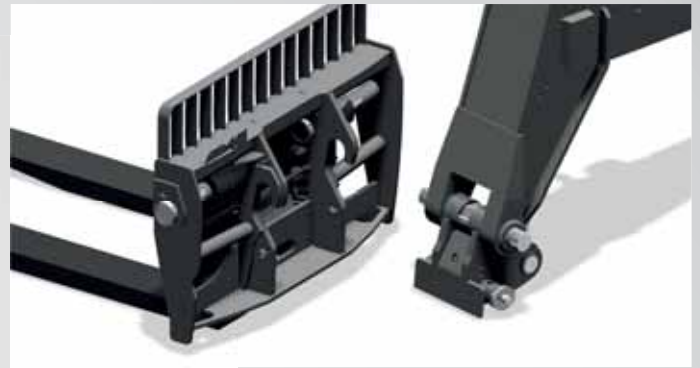
10-11-12-14
Max. height



10-16-24-27-30-35-45
Lifting capacity (ton)



6t (6m)-7,5t (6,5m)-8t (6,9m)-9t (6,9m)-12t (8m)
Capacity in ton at max. reach



QUICK FIT SYSTEM

All machines are equipped with a dedicated hooking system to the accessory that grants a rapid, solid and efficient coupling. This is assisted by an electronic R.F.I.D. system that, once recognized the mounted attachment, automatically sets load limits increasing the safety while working.



AXLES

The machines heavy duty axles with hydraulic servo-assisted multidisc brake in oil bath, with heavy duty 4 stage epicyclic reduction.



ROUGH TERRAIN












All the machines are equipped with 4 wheel drive and steering high ground clearance, that makes the machine extremely safe and stable even in the most bumpy rough terrain.

Versatility

The great potential of Magni machines is completely achieved by choosing the right attachment among all the possible options given.

It is in fact true, that all attachments are interchangeable giving the possibility to have one machine that can perform more than one task.

ATTACHMENTS OPTIONS

FORKS		
<p>STANDARD</p>  <p>10 Ton 16 Ton 24 Ton 30 Ton 35 Ton 45 Ton</p>	<p>WITH POSITIONER</p>  <p>10 Ton 16 Ton 24 Ton 27 Ton 30 Ton 35 Ton 45 Ton</p>	<p>WITH POSITIONER AND SIDE SHIFT</p>  <p>24 Ton 27 Ton 30 Ton 35 Ton</p>
HOOK		WHEEL HUB HANDLER
<p>SHORT</p>  <p>10 Ton 16 Ton 24 Ton 27 Ton 30 Ton 35 Ton 45 Ton</p>	<p>LONG</p>  <p>30 Ton 35 Ton 45 Ton</p>	 <p>22 Ton</p>
TYRES CLAMP		CYLINDER CLAMP
 <p>8 Ton</p>	 <p>16 Ton</p>	 <p>11 Ton</p>
HUB WITH SUSPENSION CYLINDER HANDLER	CONVEYOR BELTS HANDLER	
 <p>9 Ton (hub + suspension cylinder) 7 Ton (just cylinder)</p>		



Technical data

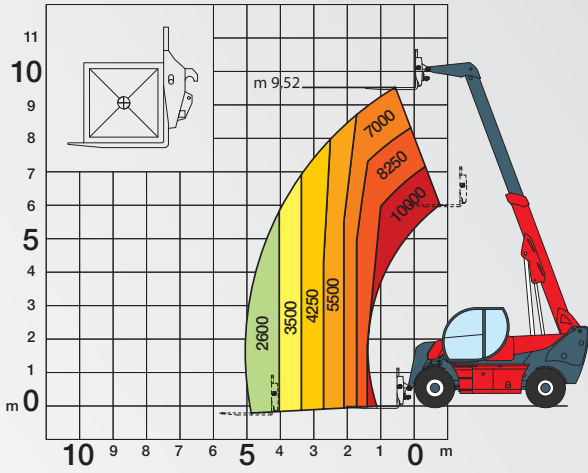


	HTH10.10	HTH16.10	HTH24.11	HTH27.11
LIFT CAPACITY	10.000 Kg at 600 mm load center	16.000 Kg at 600 mm load center	24.000 Kg at 900 mm load center	27.000 Kg at 1.200 mm load center
MAXIMUM LIFTING HEIGHT	9,52 m	9,70 m	10,55 m	10,85 m
MAXIMUM REACH	5,05 m	5,10 m	5,65 m	6,60 m
CAB	FOPS-ROPS tested hermetic cab with protectors	FOPS-ROPS tested hermetic cab with protectors	FOPS-ROPS tested hermetic cab with protectors	FOPS-ROPS tested hermetic cab with protectors
	Front, rear and upper wiper	Front, rear and upper wiper	Front, rear and upper wiper	Front, rear and upper wiper
	Headlights for road circulation, flashing beacon	Headlights for road circulation, flashing beacon	Headlights for road circulation, flashing beacon	Headlights for road circulation, flashing beacon
	Rear view mirrors	Rear view mirrors	Rear view mirrors	Rear view mirrors
	Heating - Air conditioning	Heating - Air conditioning	Heating - Air conditioning	Heating - Air conditioning
CONTROLS	Multi-function electro proportional joystick	Multi-function electro proportional joystick	Multi-function electro proportional joystick	Multi-function electro proportional joystick
BRAKE SYSTEM	Hydraulic servo-assisted multidisc brake in oil bath on both axles, with double circuit	Hydraulic servo-assisted multidisc brake in oil bath on both axles, with double circuit	Hydraulic servo-assisted multidisc brake in oil bath on both axles, with double circuit	Hydraulic servo-assisted multidisc brake in oil bath on both axles, with double circuit
	Negative parking brake	Negative parking brake	Negative parking brake	Negative parking brake
ENGINE	Deutz TCD 3.6 L4 Stage IV	Mercedes OM 934 LA Stage IV	Mercedes OM 934 LA Stage IV	Mercedes OM 934 LA Stage IV
	Turbo intercooler	Turbo intercooler	Turbo intercooler	Turbo intercooler
	4 cylinders / 3.600 cm ³	4 cylinders / 5.130 cm ³	4 cylinders / 5.130 cm ³	4 cylinders / 5.130 cm ³
	Power 100 kW - 136 HP	Power 129kW - 175 HP	Power 150 kW - 204 HP	Power 150 kW - 204 HP
	Max rpm = 2.300	Max rpm = 2.200	Max rpm = 2.200	Max rpm = 2.200
	Max torque 500 Nm at 1.400 rpm	Max torque 750 Nm at 1.200-1.600 rpm	Max torque 800 Nm at 1.200-1.600 rpm	Max torque 800 Nm at 1.200-1.600 rpm
	Electronic injection (single pump for each injector) Diesel turbo	Electronic injection (single pump for each injector) Diesel turbo	Electronic injection (single pump for each injector) Diesel turbo	Electronic injection (single pump for each injector) Diesel turbo
	Liquid cooling system	Liquid cooling system	Liquid cooling system	Intercooler cooling system
AXLES	Heavy Duty with epicyclic reduction	Heavy Duty with 2-stage epicyclic reduction	Heavy Duty with 4-stage epicyclic reduction	Heavy Duty with 2-stage epicyclic reduction
	One steering cylinders each axle	One steering cylinder each axle	One steering cylinders each axle	One steering cylinders each axle
	Levelling correction front axle at + 8° on the right and + 8° on the left	Levelling correction front axle at + 8° on the right and + 8° on the left	Levelling correction front axle at + 5° on the right and + 5° on the left	Levelling correction front axle at + 5° on the right and + 5° on the left
	3 types of steering: - with front steering - with round steer - with crab steering	3 types of steering: - with front steering - with round steer - with crab steering	3 types of steering: - with front steering - with round steer - with crab steering	3 types of steering: - with front steering - with round steer - with crab steering
	Tilting rear axle	Tilting rear axle	Tilting rear axle	Tilting rear axle
PERFORMANCE	Max. travel speed: 40 km/h	Max. travel speed: 25 km/h	Max. travel speed: 25 km/h	Max. travel speed: 25 km/h
	Drawbar pull: 88 kN	Drawbar pull: 180 kN	Drawbar pull: 180 kN	Drawbar pull: 180 kN
	Gradeability: 35%	Gradeability: 34%	Gradeability: 34%	Gradeability: 30%
WEIGHTS	Turning radius (at wheels): 4.725 mm	Turning radius (at wheels): 5.400 mm	Turning radius (at wheels): 5.400 mm	Turning radius (at wheels): 8.225 mm
	Total unladen: 13.900 kg	Total unladen: 20.500 kg	Total unladen: 29.700 kg	Total unladen: 35.500 kg
	Front axle unladen (boom retracted and lowered): 6.300 kg	Front axle unladen (boom retracted and lowered): 9.000 kg	Front axle unladen (boom retracted and lowered): 9.200 kg	Front axle unladen (boom retracted and lowered): 12.700 kg
TRANSMISSION	Rear axle unladen (boom retracted and lowered): 7.600 kg	Rear axle unladen (boom retracted and lowered): 11.500 kg	Rear axle unladen (boom retracted and lowered): 20.500 kg	Rear axle unladen (boom retracted and lowered): 22.800 kg
	Rexroth hydrostatics	Rexroth hydrostatics	Rexroth hydrostatics	Rexroth hydrostatics
	Variable displacement hydrostatic pump with electronic control	Variable displacement hydrostatic pump with electronic control	Variable displacement hydrostatic pump with electronic control	Variable displacement hydrostatic pump with electronic control
HYDRAULIC CIRCUIT	One variable displacement hydrostatic motor	One variable displacement hydrostatic motor	One variable displacement hydrostatic motor	One variable displacement hydrostatic motor
	Hydraulic gearbox with 2 speeds forward / reverse	Hydraulic gearbox with 2 speeds forward / reverse Differential hydraulic locking	Hydraulic gearbox with 2 speeds forward / reverse. Differential hydraulic locking	Hydraulic gearbox with 2 speeds forward / reverse. Differential hydraulic locking
	Load sensing piston pump	Load sensing piston pump	Load sensing piston pump	Load sensing piston pump
	Circuit at 350 bar	Circuit at 350 bar	Circuit at 350 bar	Circuit at 350 bar
TANKS CAPACITIES	Rexroth Proportional hydraulic distributor	Rexroth Proportional hydraulic distributor	Rexroth Proportional hydraulic distributor	Rexroth Proportional hydraulic distributor
	Suction and return line filters	Suction and return line filters	Suction and return line filters	Suction and return line filters
	High pressure flexible hoses	High pressure flexible hoses	High pressure flexible hoses	High pressure flexible hoses
TYRES DIMENSIONS	Engine oil = 8 l	Engine oil = 20,5 l	Engine oil = 20,5 l	Engine oil = 20,5 l
	Ad Blue = 10 l	Ad Blue = 40 l	Ad Blue = 40 l	Ad Blue = 40 l
	Cooling liquid = 25l	Cooling liquid = 25l	Cooling liquid = 25l	Cooling liquid = 25l
	Hydraulic oil tank = 210 l	Hydraulic oil tank = 210 l	Hydraulic oil tank = 210 l	Hydraulic oil tank = 300 l
SAFETY	Fuel tank = 200 l	Fuel tank = 200 l	Fuel tank = 200 l	Fuel tank = 300 l
	18,00 - R22,5 ** two each axle, driving and steering	16,00 - R25 ** two each axle, driving and steering	18,00 - R25 ** two each axle, driving and steering	26,5 - R25 ** two each axle, driving and steering
SAFETY	Electronic safety system which controls the load with definition of the lifted load, radius and comparison with the diagrams stored.	Electronic safety system which controls the load with definition of the lifted load, radius and comparison with the diagrams stored.	Electronic safety system which controls the load with definition of the lifted load, radius and comparison with the diagrams stored.	Electronic safety system which controls the load with definition of the lifted load, radius and comparison with the diagrams stored.
	Block of aggravating movements of the load.	Block of aggravating movements of the load.	Block of aggravating movements of the load.	Block of aggravating movements of the load.
	Safety valves on cylinders	Safety valves on cylinders	Safety valves on cylinders	Safety valves on cylinders

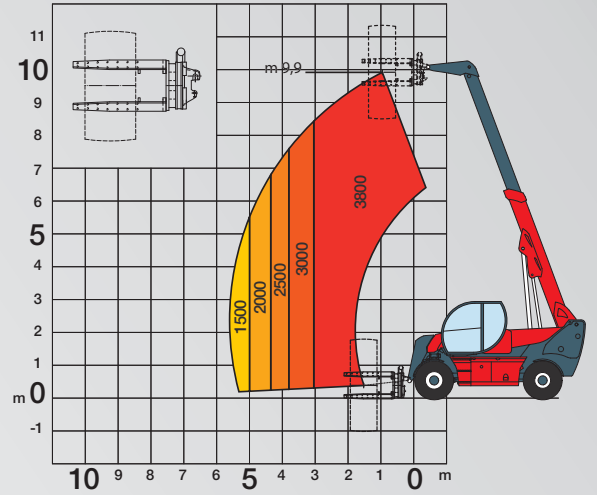
Technical data

	HTH30.12	HTH35.12	HTH45.14
LIFT CAPACITY	30.000 Kg at 1.200 mm load center	35.000 Kg at 1.200 mm load center	45.000 Kg at 1.200 mm load center
MAXIMUM LIFTING EIGHT	11,72 m	11,72 m	14,00 m
MAXIMUM REACH	6,86 m	6,86 m	8,00 m
CAB	FOPS-ROPS tested hermetic cab with protectors Front, rear and upper wiper Headlights for road circulation, flashing beacon Rear view mirrors Heating - Air conditioning	FOPS-ROPS tested hermetic cab with protectors Front, rear and upper wiper Headlights for road circulation, flashing beacon Rear view mirrors Heating - Air conditioning	FOPS-ROPS tested hermetic cab with protectors Front, rear and upper wiper Headlights for road circulation, flashing beacon Rear view mirrors Heating - Air conditioning
CONTROLS	Multi-function electro proportional joystick	Multi-function electro proportional joystick	Multi-function electro proportional joystick
BRAKE SYSTEM	Hydraulic servo-assisted multidisc brake in oil bath on both axles, with double circuit Negative parking brake	Hydraulic servo-assisted multidisc brake in oil bath on both axles, with double circuit Negative parking brake	Hydraulic servo-assisted multidisc brake in oil bath on both axles, with double circuit Negative parking brake
ENGINE	Mercedes OM 936 LA Stage IV Turbo intercooler 6 cylinders / 7.700 cm ³ Power 260 kW - 350 HP Max rpm = 2.200 Max torque 1.400 Nm at 1.200 rpm Electronic injection (single pump for each injector) Diesel turbo Liquid cooling system	Mercedes OM 936 LA Stage IV Turbo intercooler 6 cylinders / 7.700 cm ³ Power 260 kW - 350 HP Max rpm = 2.200 Max torque 1.400 Nm at 1.200 rpm Electronic injection (single pump for each injector) Diesel turbo Liquid cooling system	Mercedes OM 936 LA Stage IV Turbo intercooler 6 cylinders / 7.700 cm ³ Power 260 kW - 350 HP Max rpm = 2.200 Max torque 1.400 Nm at 1.200 rpm Electronic injection (single pump for each injector) Diesel turbo Liquid cooling system
AXLES	Heavy Duty with 2-stage epicyclic reduction Two steering cylinders each axle Levelling correction front axle at + 5° on the right and + 5° on the left 3 types of steering: - with front steering - with round steer - with crab steering Tilting rear axle	Heavy Duty with 2-stage epicyclic reduction Two steering cylinders each axle Levelling correction front axle at + 5° on the right and + 5° on the left 3 types of steering: - with front steering - with round steer - with crab steering Tilting rear axle	Heavy Duty with 2-stage epicyclic reduction Two steering cylinders each axle Levelling correction front axle at + 5° on the right and + 5° on the left 3 types of steering: - with front steering - with round steer - with crab steering Tilting rear axle
PERFORMANCE	Max. travel speed: 25 km/h Drawbar pull: 365 kN Gradeability: 58% Turning radius (at wheels): 7.990 mm	Max. travel speed: 25 km/h Drawbar pull: 365 kN Gradeability: 50% Turning radius (at wheels): 7.990 mm	Max. travel speed: 20 km/h Drawbar pull: 390 kN Gradeability: 50% Turning radius (at wheels): 9.600 mm
WEIGHTS	Total unladen: 40.900 kg Front axle unladen (boom retracted and lowered): 18.700 kg Rear axle unladen (boom retracted and lowered): 22.200 kg	Total unladen: 45.000 kg Front axle unladen (boom retracted and lowered): 18.900 kg Rear axle unladen (boom retracted and lowered): 26.100 kg	Total unladen: 58.000 kg Front axle unladen (boom retracted and lowered): 22.900 kg Rear axle unladen (boom retracted and lowered): 35.100 kg
TRANSMISSION	Rexroth hydrostatics Variable displacement hydrostatic pump with electronic control One variable displacement hydrostatic motor Hydraulic gearbox with 3 speeds forward / reverse. Differential hydraulic locking	Rexroth hydrostatics Variable displacement hydrostatic pump with electronic control One variable displacement hydrostatic motor Hydraulic gearbox with 3 speeds forward / reverse. Differential hydraulic locking	Rexroth hydrostatics Variable displacement hydrostatic pump with electronic control One variable displacement hydrostatic motor Hydraulic gearbox with 3 speeds forward / reverse. Differential hydraulic locking
HYDRAULIC CIRCUIT	Load sensing piston pump Circuit at 350 bar Rexroth Proportional hydraulic distributor Suction and return line filters High pressure flexible hoses	Load sensing piston pump Circuit at 350 bar Rexroth Proportional hydraulic distributor Suction and return line filters High pressure flexible hoses	Load sensing piston pump Circuit at 350 bar Rexroth Proportional hydraulic distributor Suction and return line filters High pressure flexible hoses
TANKS CAPACITIES	Engine oil = 29 l Ad Blue = 40 l Cooling liquid = 25 l Hydraulic oil tank = 300 l Fuel tank = 300 l	Engine oil = 29 l Ad Blue = 40 l Cooling liquid = 25 l Hydraulic oil tank = 300 l Fuel tank = 300 l	Engine oil = N.D. Ad Blue = N.D. Cooling liquid = N.D. Hydraulic oil tank = N.D. Fuel tank = N.D.
TYRES DIMENSIONS	29,5 - R25 ** two each axle, driving and steering 24.00-35**optional	29,5 - R25 ** two each axle, driving and steering	29,5 - R25 ** two each axle, driving and steering
SAFETY	Electronic safety system which controls the load with definition of the lifted load, radius and comparison with the diagrams stored. Block of aggravating movements of the load. Safety valves on cylinders	Electronic safety system which controls the load with definition of the lifted load, radius and comparison with the diagrams stored. Block of aggravating movements of the load. Safety valves on cylinders	Electronic safety system which controls the load with definition of the lifted load, radius and comparison with the diagrams stored. Block of aggravating movements of the load. Safety valves on cylinders

HTH 10.10

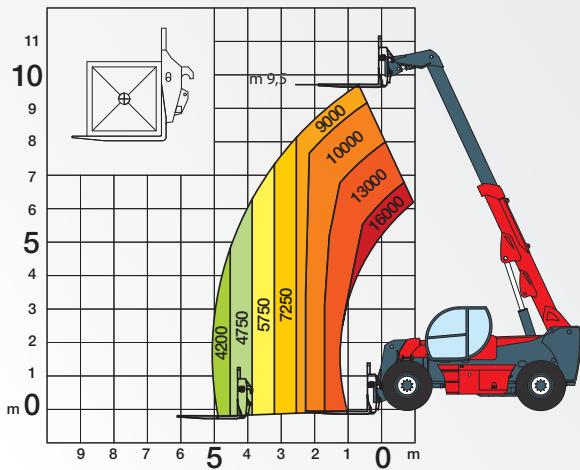


Load chart with forks

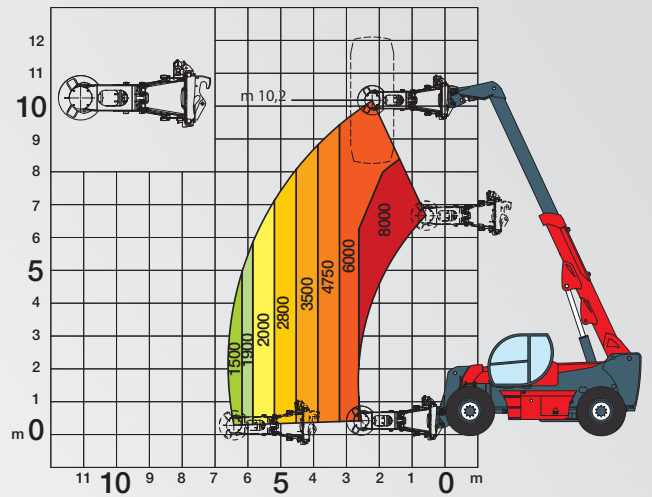


Tyres handler TC3,8-49

HTH 16.10

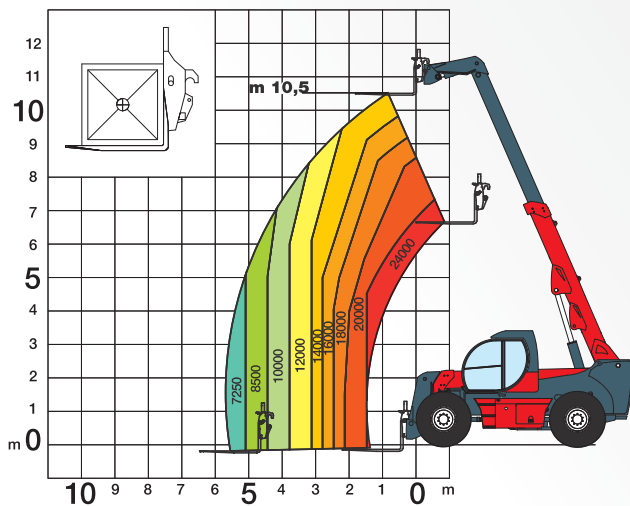


Load chart with forks

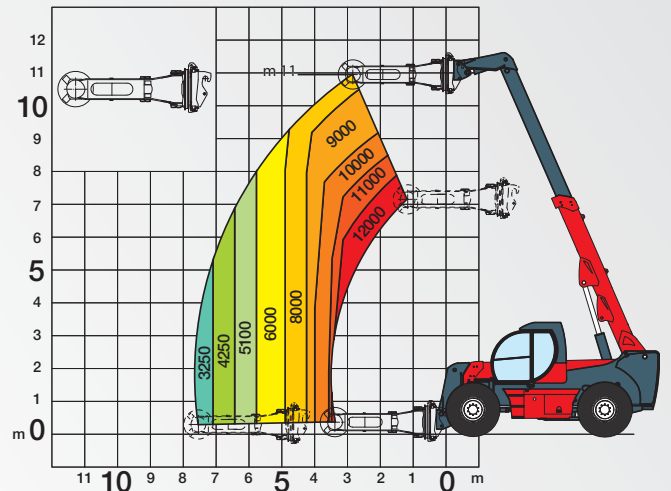


Tyres handler model TC08.63 Load chart

HTH 24.11

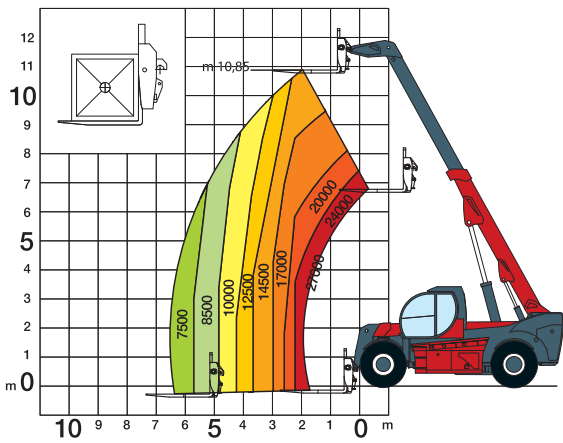


Load chart with forks

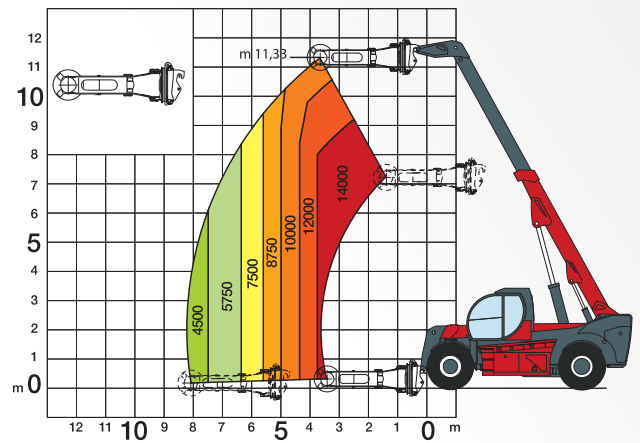


Tyres handler model TC16.63 Load chart

HTH 27.11

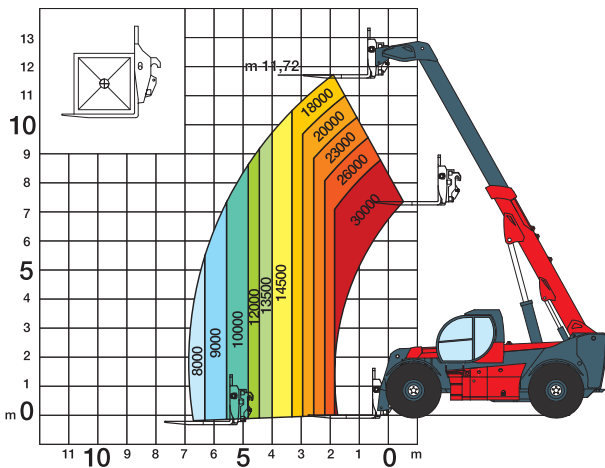


Load chart with forks

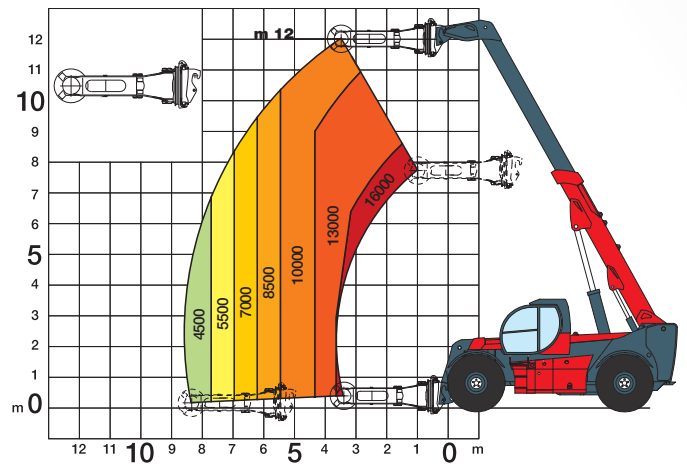


Tyres handler model TC16.63 Load chart

HTH 30.12

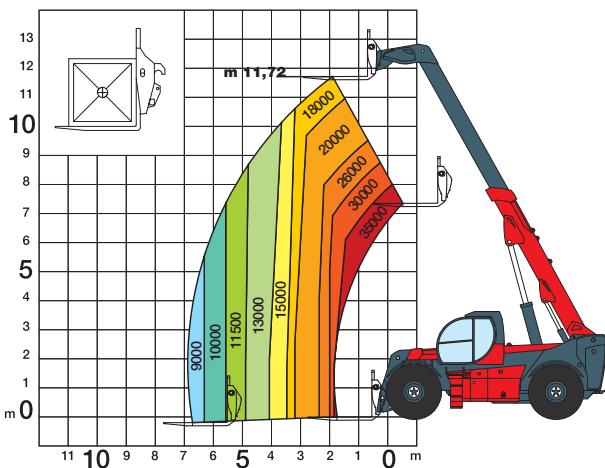


Load chart with forks

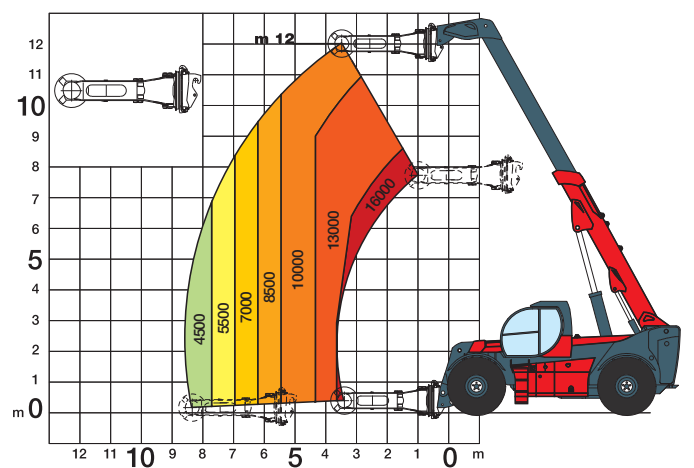


Tyres handler model TC16.63 Load chart

HTH 35.12

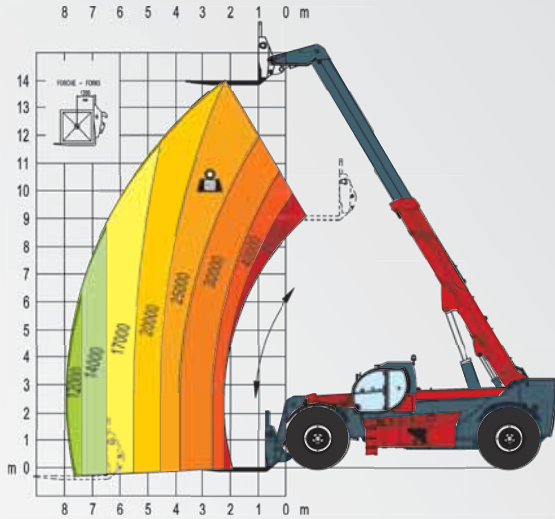


Load chart with forks

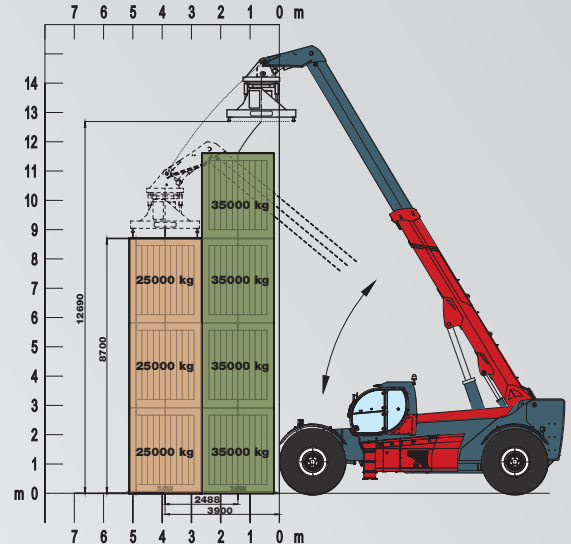


Tyres handler model TC16.63 Load chart

HTH 45.14

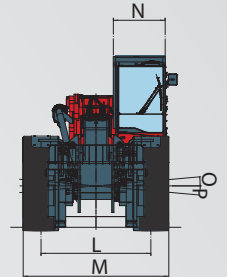
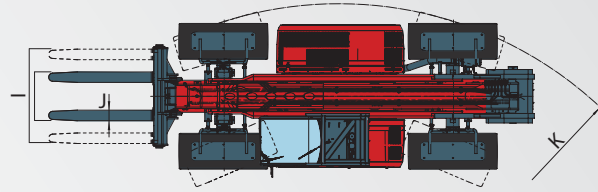
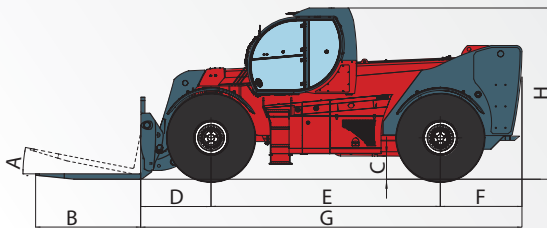


Load chart with forks



Spreader container 20-40FT Load chart

DIMENSIONS



HTH	10.10	16.10	24.11	27.11	30.12	35.12	45.14
A	14°	12°	12°	11°	11°	11°	11°
B (mm)	1500	1500	1800	2400	2400	2400	2400
C (mm)	370	440	430	530	550	550	620
D (mm)	1000	1150	1270	1340	1440	1440	1595
E (mm)	3300	4000	4000	4500	4800	4800	6900
F (mm)	1370	1230	1650	1710	1710	1710	1710
G (mm)	5660	6380	6920	7550	7950	7950	10705
H (mm)	2990	3100	3000	3520	3600	3600	3800
I (mm)	max 1740 min 820	max 2000 min 1160	max 1990 min 1250	max 2400 min 1430	max 1990 min 1360	max 2030 min 1400	on request
J (mm)	200	200	250	300	300	320	on request
K (mm)	4100	5060	5320	8520	9710	9710	9600
L (mm)	2070	2020	2400	2230	2250	2250	2560
M (mm)	2550	2550	2960	2975	3000	3000	3203
N (mm)	1050	1050	1050	1050	1050	1050	1050
O	8°	8°	10°	5°	5°	5°	5°
P	8°	8°	10°	5°	5°	5°	5°



Magni Telescopic Handlers srl

Via Magellano, 22 - 41013 Castelfranco Emilia, Modena, Italia
Tel: +39 059 8630811 - Fax: +39 059 8638012
commerciale@magnith.com - www.magnith.com

The data in this brochure are informative and subject to change without notice